

Jabra Solemate Max

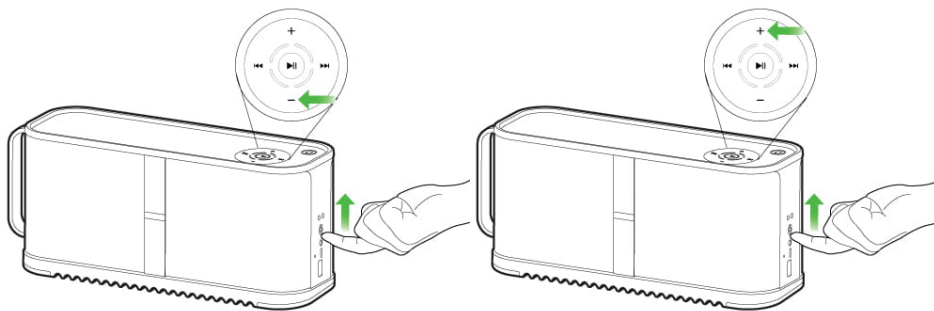
How do I manually turn off/on voice guidance on my Jabra Solemate Max?

Voice guidance is turned on as the default setting, on your Jabra Solemate Max.

To manually turn off/on voice guidance, follow these steps.

Turn off voice guidance

1. Turn off your Jabra Solemate Max.
2. Turn on your Jabra Solemate Max, and simultaneously press and hold the **Volume -** button. When you hear the announcement “sound prompts off”, release the **Volume -** button. This indicates that voice guidance has been turned off.



Turn on voice guidance

1. Turn off your Jabra Solemate Max.
2. Turn on your Jabra Solemate Max, and simultaneously press and hold the **Volume +** button. When you hear the announcement “sound prompts on”, release the **Volume +** button. This indicates that voice guidance has been turned on.

